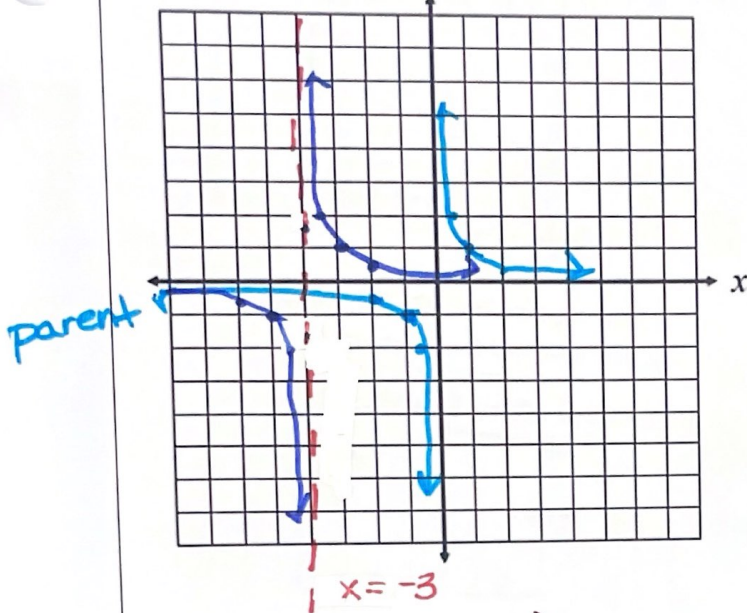


4/22

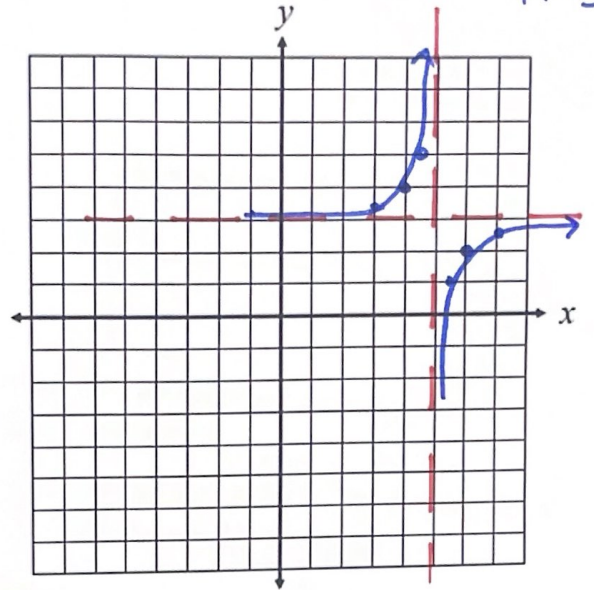
4. Graph  $f(x) = \frac{1}{x+3}$   $h = -3$



Domain  $(-\infty, -3) \cup (-3, \infty)$  VA:  $x = -3$

Range  $(-\infty, 0) \cup (0, \infty)$  HA:  $y = 0$

5. Graph  $f(x) = \frac{-1}{x-5} + 3$   $h = 5$   
 $k = 3$



Domain  $(-\infty, 5) \cup (5, \infty)$  VA:  $x = 5$

Range  $(-\infty, 3) \cup (3, \infty)$  HA:  $y = 3$

- Algebra 2
- horizontal shift
  - stretch
  - reflection
  - vertical shift

$x-3$

$x-5$  2 units left